



COMMERCIAL LAT ROW

Model #: DMLR1

DIMENSIONS

Weight

517 lbs / 235 kgs

Product Dimensions

L - 67 in / 171 cm

W - 32 in / 82 cm

H - 85 in / 216 cm

Full Commercial Warranty

Limited Lifetime Frame, 1y parts, 5y moving parts

Residential Warranty

Limited Lifetime Frame & Parts

FEATURES

Multi-Function Upper Pulleys

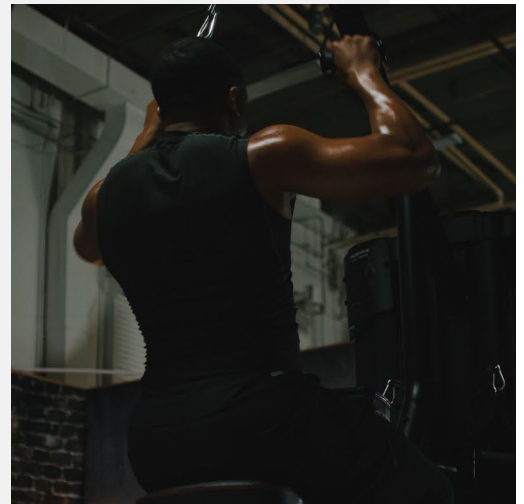
Upper pulleys with wide ranges of motion allow you to integrate bars & varying exercises.

Independent Low Pulleys

Separate weight stacks allow for isolateral pulling & varying low row exercises.

Adjustable Seat Design

One pin seat adjustment & comfort leg lock ensure proper positioning for everyone.



SPECIFICATIONS

Frame - Heavy-duty, round steel

Color - Matte black powder coat finish

Commercial Pads - Double stitched, high grade naugahyde

Weight Stacks - 2 x 115 lbs (52 kgs)
(1:1 ratio for 230 lbs max)

Optional Add Ons - 2 x 5 lbs Add-On Weights
(240 lbs max), Aluminum Lat Bar